



moonee ponds creek
co-ordination committee

Ponderings

Autumn-Winter 2014 Issue 44

Seasonal Newsletter of the Moonee
Ponds Creek Coordination Committee Inc

Help mpccc make
a difference!

Tax-deductible
donations can be
made to the MPC
Environment Fund.

Go to mpccc.org
for information.

advocate educate interpret participate rehabilitate revegetate



Let's Celebrate!!

The Friends of Moonee Ponds Creek is 25 years old! And to celebrate we are
inviting friends and anyone who cares about the Creek to join us on

Sunday 15 June at 10.00am – 12 noon,

at the end of **Johns Street, Oak Park** (Mel 16 F7)

for an important **Planting**, followed by a **BBQ** and **sharing memories of the Creek**,

**So come and join the fun and contribute to making this site
beautiful again!**

Wear suitable clothing, and sturdy, closed-toed shoes for the planting, (tools and
equipment will be provided by Moreland City Council)

**Please bring along any photographs you have of the Creek in days gone by
or just memories to share of catching yabbies or tadpoles, watching birds,
or just getting wet...!!**



This is what the site looked like in
2011 – exotic trees and car port

**The site has been the scene of much activity over the past few
months.**

In 2011, Kaye Oddie, Carolyn Layton and Stella Blay of the Friends of
Moonee Ponds Creek, met Lori Arthur of Moreland City Council, to
propose the removal of the woody weeds to allow a vista across the Creek and the creation of an oasis of natural
vegetation at the end of Johns Street. We also urged the council to take action on an
ugly, and illegal, carport built on the reservation at the end of the road.

With the support from Melbourne Water's River Health Incentives Program, Moreland
City Council (facilitated by Vince Andreana, their Natural Resource Management
Officer) has now removed a stand of elm suckers, put in a new path, built a flight of
steps down to the creek-side path and prepared the site for
planting with more suitable vegetation. And with the carport
gone, all is set to transform the site into a
welcoming connection to the Creek.

And this is what it
looks like now –
carport, exotics and
weed trees gone



Here's where to come



The new steps
down to the Creek



The Creek in Flood, Hope Street, West
Brunswick (date unknown) and July 1963



Dawson St Bridge over Moonee Ponds Creek 1926

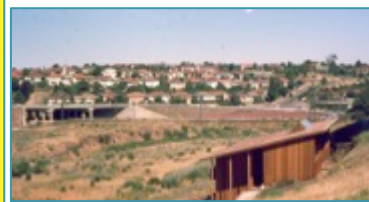


The
meandering
Creek, free
from
constraint
(date and
location
unknown)

The Moonee Ponds Creek looking NW to Pascoe Vale Road, August 1965, and
diverted for the Tullamarine Freeway in early 1967



The Creek, pre-Citylink ...
photos courtesy of the Ottrey
family who used to live in
Forster Ct, Pascoe Vale, Audrey
Biggs who has lived in Balfe Av
Brunswick West for a very long
time and Bob Chalmers



Winter Planting Calendar

| Date | Time | Friends' Group | Location | Melway | Council |
|------------------------------|-------------------|--|--|--------|---------------|
| Sunday 15 June | 10am – 12 noon | Friends of Moonee Ponds Creek | End of Johns Street, Oak Park | 16 F7 | Moreland |
| | 2 – 4pm | Friends of Five Mile Creek | End of Government Road, Essendon | 28 J2 | Moonee Valley |
| Sunday 6 July | 10am – 12 noon | Friends of Moonee Ponds Creek | Horseshoe Bend, Strathmore | 16 D5 | Moonee Valley |
| Sunday 13 July | 10am – 12 noon | Friends of Sacred Kingfisher | Broadmeadows Road, opp Circular Road, Westmeadows | 6 B8 | Hume |
| Sunday 27 July | 10am – 12 noon | NATIONAL TREE DAY Gowanbrae Residents' Group | Cnr Adelaide and Primrose Blvds, Gowanbrae | 16 D1 | Moreland |
| Sunday 3 August | 10am – 12 noon | Friends of Westbreen Creek | KW Joyce Reserve, Northumberland Road, Pascoe Vale | 17 A6 | Moreland |
| Saturday 23 August | 1 – 3pm | Brunswick SW Planters | Brady / Denzil Don Reserve, Victoria St, Brunswick West | 29 B7 | Moreland |
| Sunday 28 September | 12.30 – 3pm | Friends of Upper Moonee Ponds Creek | The Tarnuk, end of Wright Street, Westmeadows | 5 G6 | Hume |

Planting in the Lower Reaches of the Creek

REGIONAL RAIL LINK City – Maribyrnong River, Community Planting



The site in July 2013, with construction going on around it, and the Capital City Trail diverted across it

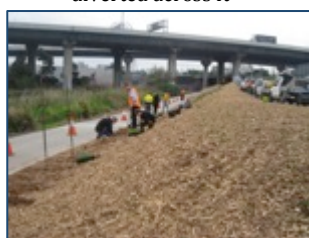
The Regional Rail Link section City to Maribyrnong River, crosses the Moonee Ponds Creek, just north of Dynon Road, and there, overshadowed by on / off ramps and CityLink, is a small patch of land near the new rail link works, next to the lower Moonee Ponds Creek and the Capital City Trail. This area was once planted as part of the construction of CityLink, but neglect and droughts left it denuded and in a sad, weed-infested state.

Seeing the work going on around this site with the new rail link, Kaye Oddie, Secretary of the FoMPC, approached the Regional Rail Link: City-Maribyrnong (RRL-CMR) to see if they would be interested in revegetating it.

Despite the fact that this patch of land was outside their area of responsibility, the response was very positive and in a wonderful corporate gesture, RRL-CMR sponsored the revegetation project. This entailed clearing the weeds, preparation and mulching of the site, and an initial planting of seedlings of shrubs and small trees.

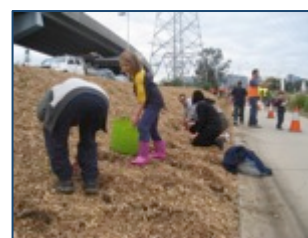
On Saturday 31st May, 30 Friends, nearby residents, RRP-CMR staff and Scouts, assisted by EcoDynamics and Serco, planted 400 more indigenous plants, bringing the total to around 1000 trees, shrubs, forbs and ground covers in the plot.

A good morning's work and great community/corporate liaison in creating a 'green link' along the Creek. Enormous thanks are due to Sara Moreiro and Brett Purcell of RRLCMR for facilitating the project and to all the people who turned up on a damp Saturday morning to revive this linear reserve.



The site – Trail path diversion gone, mulched and ready for planting,

Some of the wonderful volunteers who came along to help



East West Link Update

Over 6 weeks in March and April, a Planning Panel heard submissions on the Comprehensive Impact Statement (CIS) for the East West Link - the disastrous freeway project that would destroy or significantly compromise much of Royal Park and the Moonee Ponds Creek in Flemington, Kensington and Brunswick West. A total of 1477 submissions were received – all, bar one, critical of the freeway link. The Friends of Moonee Ponds Creek and the MPCCC made submissions and presentations to the panel, as well as many individual members, in the hope that some sense will be introduced to the project. To read the submissions go to: <http://www.dpcd.vic.gov.au/planning/panelsandcommittees/current/east-west-link-eastern-section-project-assessment-committee>, and follow the links to the submissions.

The CIS Assessment Committee submitted its report to the Minister for Planning at the end of May and the Minister has another month to consider the report and act on the recommendations or otherwise.

The State Government has announced it wants to let construction contracts prior to the election - something many say it has no mandate to do, particularly because no proper business case to justify the EWL has been produced and because the higher priority infrastructure, the original Metro Rail project should proceed instead.

Cut-leaf Goodenia (*Goodenia pinatafida*) - one of many significant species in Royal Park's remnant native vegetation site that would be destroyed for the large western portal for the East West Link

