



moonee ponds creek
co-ordination committee

Ponderings

Seasonal newsletter of the
Moonee Ponds Creek Coordination Committee
Spring 2015 | Issue 48

advocate educate interpret participate rehabilitate revegetate



A Shingleback Lizard found by
Andre Braakhuis at Woodlands



A Flame Robin sighted by Anna
Lanigan at North Jacana Wetland

A Little Pied Cormorant is regularly
seen in Strathmore at Nursery
Corner by Nina Franceschi Eason



Over the years we have depended on funding to produce, print and post Ponderings. It's a very costly exercise. We believe the future of Ponderings can be guaranteed by switching to digital distribution to as many recipients as we can.

If not already receiving Ponderings by email, please help us in this endeavour by emailing us your details to ponderings@mpccc.org

If you do not have access to a computer, please write to Ponderings, PO Box 54, Essendon Vic 3040 advising of your address details for a printed copy.

FAREWELL TO PRINT EDITIONS

PLEASE CONTINUE TO SEND US YOUR
SIGHTINGS FOR FUTURE PONDERINGS. PHOTOS
FROM ALL SECTIONS OF THE CREEK WELCOME!

This almost metre long native eel was spotted by Claude Marinelli behind Strathmore North Primary School. There have also been sightings in the creek at Cross Keys Reserve, Essendon.



A female **Blue-billed Duck** with four ducklings was seen in the reed-enclosed pond downstream of the footbridge near the Jacana sports ovals. This sighting by Charles Silveira is the first breeding record noted from 2000 to 2015. Thanks to Alan and Jan for this report from Eremaea Birdlines.



This freshwater Turtle rescued by Priscilla in Strathmore is now in care at a Wildlife Refuge. It was likely an escaped pet and considered to be decades old.

Turtles are just coming out of hibernation in Melbourne, so she may have been going for her first Spring walkabout.



A Boobook Owl sighted by Pauline & Terry Mundy at Strathnaver Reserve, Strathmore

Proudly supporting
Moonee Ponds Creek
Coordination
Committee.

Banking products and personal service that help make communities bigger.

Drop into our branch at 337 Napier Street,
Strathmore or phone 9374 2607 to find out more.



Strathmore
Community Bank® Branch Bendigo Bank

strathmore3041.com.au

Bendigo and Adelaide Bank Limited, ABN 11 068 049 178 AFSL/Australian Credit Licence 237879. S48450-10 (232809_v1) (1/12/2014)

ponderings@mpccc.org | www.mpccc.org

Written and produced by Anna Lanigan and Nina Franceschi Eason

MELBOURNE Water REPORT

Melbourne Water is planning a capital weed control and revegetation project on Moonee Ponds Creek from Boeing Reserve, Strathmore Heights to CityLink, Brunswick. The project is scheduled to commence later this financial year with weed control efforts and will continue until 2017/18. The aim of the project is to increase visual amenity to the area while also enhancing the environmental values of the creek. In total approximately 9.5km of revegetation will take place.

Melbourne Water is also happy to be partnering once again with Moreland City Council in a Corridors of Green Grant which will enable further weed control and revegetation to occur on Westbreen Creek, a tributary of the Moonee Ponds Creek. The project will involve a community planting day and conclude with the installation of some interpretive signs giving an overview of the history and values of the area.



HUME NEWS

The 2015 planting season has finished for the year. Hume supported three plantings near Moonee Ponds Creek, where some 950 seedlings were planted and 70 people attended in total.



Julie's famous scones are sweet rewards for planters.

A "Greening of Hume" bus tour was arranged for Sunday 4 October. This tour visited several greening sites across Hume to see how local Friends groups have transformed their favourite reserves over the years.

On Wednesday 14 October, students from the School of Good Shepherd, Gladstone Park will be spending the morning at the Jacana Wetlands learning about water quality issues and the wetland's biodiversity (with Anna Lanigan's lovely help). Hume have also planned a similar activity with the Jacana School of Autism.

WANTED FOR ARCHIVE

ISSUE 27
SPRING 2009

PLEASE CONTACT US IF YOU FIND IT

MOONEE VALLEY NEWS

Cross Keys Reserve Master Plan

Moonee Valley City Council is developing a Master Plan to help shape the future of Cross Keys Reserve.

The Master Plan will aim to increase leisure opportunities, pathways and plantings within the Reserve. Council is keen for local residents and stakeholders to have their say in the plan.

Initial information gathering has been completed with some great feedback from the local community. Council will now be preparing a draft which we will bring back to the community in early 2016.

Have Your Say

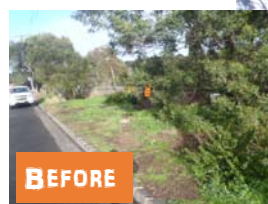
For more information or if you want to provide feedback or get an update, contact the team at:

Moonee Valley City Council
Open Space and Urban Design
PO Box 126, Moonee Ponds 3039
parkimprovements@mvcc.vic.gov.au
Ph: 9243 8888

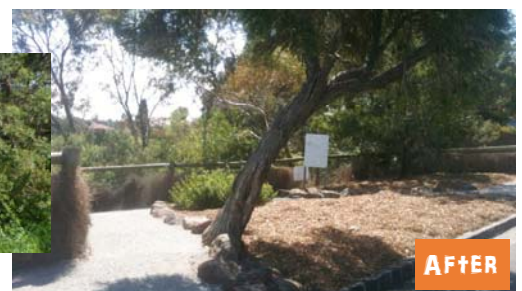
MORELAND NEWS

The 2015 planting season in Moreland has concluded and Council contractors are now busy managing the spring flush of weeds and preparing the sites for a potentially dry summer. It was another great season with over 5500 trees, shrubs and grasses planted along the Moreland side of the Moonee Ponds Creek and the Westbreen Creeks combined. In total, five community and two school planting days were held along the creek with 173 people volunteering their time enhancing the creek.

Council's landscaping team has recently completed an upgrade to the lookout at the Union Street escarpment in West Brunswick. The site at the junction of Moonee Parade and Union Street was a constant maintenance problem with regular rubbish dumping and excessive weeds constantly invading the adjoining remnant bushland site. Landscape works included path construction, rockwork, mulching and relocation of existing interpretive signage into a more accessible site. It is anticipated that these simple works will help to address the maintenance issues by improving the amenity from the street and encouraging residents to engage with this significant site.



BEFORE



AFTER

LOCAL MEMBER RAISES ISSUE OF CREEK IN STATE PARLIAMENT

Danny Pearson, MP, State Member for Essendon raised a question in Parliament on 19 August inviting the Minister for Environment, Climate Change and Water to visit the southern reaches of the Moonee Ponds Creek to find out what initiatives might be available to address the issues for wildlife habitat in the concrete lined sections.

In response, the Hon Lisa Neville MP, commended local groups for their fantastic efforts and requested that the Dept of Environment, Land, Water & Planning and Melbourne Water investigate what opportunities are available to make improvements.

Plantings



Westbreen Creek

On National Tree Day, 2700 seedlings were planted on both sides of our Trestle Bridge with great attendance by local residents and community groups. The planting project was part of our Melbourne Water Community Grant. A special ceremony was also held to unveil a commemorative plaque recognising the contributions of Allan and the late Dorothy Thomson towards the conservation of the natural environment.



National Tree Day



Nursery Bend Reserve



The Green Army along the Moonee Ponds Creek

Twelve months on from the adoption of the Urban Ecology Strategy, Moonee Valley has worked hard to enhance and protect our native vegetation as well as educate and encourage community participation.

Much of this work has been undertaken through the provision of the Federal Government's Green Army initiative. In May 2015, Moonee Valley welcomed our second Green Army Team. This time the team is focusing on works along the Moonee Ponds Creek.

Within four months, the team has carried out 10 hectares of weed control, two hectares of erosion control, spread over 100 cubic meters of mulch and planted 5000 native grasses, shrubs and trees. They have also been a great support in the running of National Tree Day, school planting activities and raising environmental awareness across the municipality.

Check out these impressive before and after photos of some of the work the team has carried out.



Before

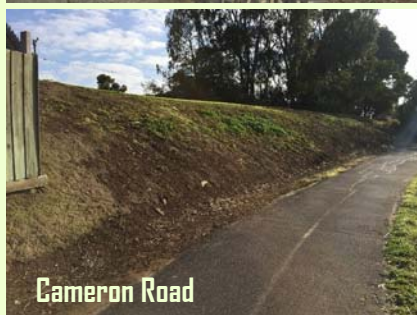
Mascoma Rocks



After



KT Smith Reserve



Cameron Road



STOP PRESS STOP PRESS STOP PRESS

Westmeadows Planning Amendment

At the upper end of the Moonee Ponds Creek, at Westmeadows, Hume Council has prepared a planning scheme amendment for a light industrial development of land opposite the Airport, between Western Avenue and the Creek.

The Friends of Moonee Ponds Creek and local residents have lodged submissions raising concerns, including allowing the Comprehensive Development Zone to extend close to the Creek and for a reservation for a possible future road across the Creek from Aitken Blvd to the Airport.

The Creek here retains its original 'chain of ponds' form, with many beautiful

old River Red Gums and is an important biolink between Woodlands Park and the Tarnuk. Its natural status would likely be detrimentally affected by allowing inappropriate development, paths and a road close to its banks.

The FoMPC have called for the section of the land close to the Creek to instead be zoned as a Public Use Zone (shown hatched on the plan) and for bioswales to be formed to take the stormwater from the development to a new wetlands in the Tarnuk.



DID YOU KNOW?

THAT FOLLOWING COMPLAINTS FROM LOCALS, THE PLANT HIRE TENANT AT THE NURSERY CORNER RESERVE SITE HAS BEEN GIVEN 10 DAYS IN ORDER TO CLEAN UP AND REMOVE VAST QUANTITIES OF BUILDING RUBBLE AND TO KEEP THE SITE CLEAR OF DEBRIS UNTIL IT IS HANDED BACK TO THE COMMUNITY AS PUBLIC SPACE IN APPROXIMATELY TWO YEARS. STAY VIGILANT AND PLEASE REPORT ANY FAILURES TO COUNCIL.



Reporting Incidents

Reporting problems like the above has never been easier. If you have a phone with a camera, simply take a photograph and send. SNAP SEND SOLVE is a free app that allows you to easily report feedback to relevant authorities in Australia and New Zealand by automatically emailing the photo to the relevant council or authority to take action to resolve the problem.

To do this, go to www.snapsendsolve.com and install the app.

PUBLIC WORKSHOP

How do you value Moonee Ponds Creek?

You're invited to participate in a public workshop on what you think about the section of Moonee Ponds Creek from Arden Street to Macaulay Road, North Melbourne.

When: Tuesday 27 October 2015, 6.00-7.30pm

Where: North Melbourne Community Centre
49-53 Buncle Street, North Melbourne

What's the workshop about?

The Australian Research Centre for Urban Ecology is conducting research to understand what people think about waterways in cities. The research will contribute to our understanding of how people value waterways in cities and will help urban planners understand how the public view waterways in order to create sustainable cities that provide healthy waterways enjoyable for people.

There will be a **live native animal show** by Wild Action and an interactive presentation from Melbourne artist Emah Fox talking about the ways people hear sounds from waterways. The presentations will be followed by a mapping exercise about where certain values exist along Moonee Ponds Creek, from Arden Street to Macaulay Road, North Melbourne.

For more information or to RSVP, contact Alison Farrar alison.farrar@unimelb.edu.au or 8344 0267



THE UNIVERSITY OF
MELBOURNE



Creeky Links

www.mooneeponds creek.org.au
www.facebook.com/groups/friendsofmooneeponds creek
www.friendsofmerricreek.org.au/
www.facebook.com/FriendsOfSteeleCreekInc
www.facebook.com/groups/1541338476087146
www.fmvonline.com
www.bowerbird.org.au/projects/5249

SPRING INTO FROGWATCH

The Melbourne Water Frog Census Program needs volunteers to record frog calls at their local waterways during the months of April, August, October and November. Volunteers are welcome to submit calls all year round but the majority of frogs are most active during these months. **It's fun and a five minute recording along with a short report is all it takes.**

Visit www.melbournewater.com.au/frogcensus for further information.

